

# Dederang BESS

Newsletter – Edition 1



**We are in the very early stages of development of a potential Battery Energy Storage System (BESS) adjacent to the existing Dederang Terminal Station.**

| Project Status | Indicative Capacity | Local Government Area | Location           |
|----------------|---------------------|-----------------------|--------------------|
| In Development | 400MWh              | Alpine Shire          | Dederang, Victoria |

### Who is Mint

Mint Renewables is a developer, owner and operator of renewable energy and storage projects.

The team was formed in late 2022 and is headquartered in Melbourne, working across Australia in the locations where our projects are proposed. The team has extensive experience in Victoria in the development, construction and operations of wind and storage projects, and collectively have worked in key roles on a significant proportion of projects ever built in Australia.

We are committed to engaging respectfully with the communities in which we plan and operate projects, to be sensitive to environmental and cultural values and to make a positive contribution to the regions in which we will operate. We aim to be long-term members of the communities we invest in.

### What is proposed?

Mint have been fortunate enough to partner with a local landholder and are currently proposing to lease some of their land to develop a Battery Energy Storage System (BESS), adjacent to the existing Dederang Terminal Station. The proposal is largely located on their private land, with some works required within the existing Terminal Station land (owned by AusNet Services). This is Mints only potential project in Dederang.

We are in the very early stages of development, working through feasibility studies and undertaking early engagement with interested neighbours, Council, Department of Transport and Planning, CFA, Catchment Management Authority and Regional Roads Victoria to understand the site constraints to inform what a BESS project could look like in this location.

The findings from these studies and early engagement will inform the indicative design of the project, including its size, layout and any mitigation measures required. This information will be used to inform and present through ongoing and broader community engagement, and then further refined in an application for a planning permit.

We are currently targeting a nominal installed capacity of 400MWh (exploring 2hr or 4hr durations) with an indicative development footprint of approximately 4 ha. The final size of the project will be dependent on the environmental constraints, the final selected BESS model, and feedback from stakeholders.

BESS provide the ability to store energy, so that excess energy produced during periods of low demand or high output (e.g., from existing variable sources of solar in the surrounding region) can be stored for use during periods when there might otherwise be a shortfall in supply. BESS can also provide a range of important services to support the stable operation of the electricity grid including frequency regulation and voltage control. Initial grid investigations suggest that this is a suitable location to provide these types of services.

### How can the community provide feedback?

We are committed to engage respectfully with the communities in which we plan and operate projects.

**Active engagement with stakeholders will be undertaken progressively over the coming months.**

**We will listen to and use feedback to inform the design and construction of the project, the way we work together and share benefits with the local community, and the ways we consult and keep you informed.**

We have kicked off outreach and engagement with Council and regulatory and referral authorities (CFA, Regional Roads Victoria, North East Catchment Management Authority, Department of Transport and Planning), as well as direct neighbours of the proposal.

Following this, we will undertake broader community engagement, likely through drop-in information sessions, held somewhere locally, to be arranged early in the new year (after the holiday period). We will look to plan and communicate the timing of this as early as possible to ensure that all interested parties can be heard.

In response to what we hear, a further and ongoing engagement program will be developed.

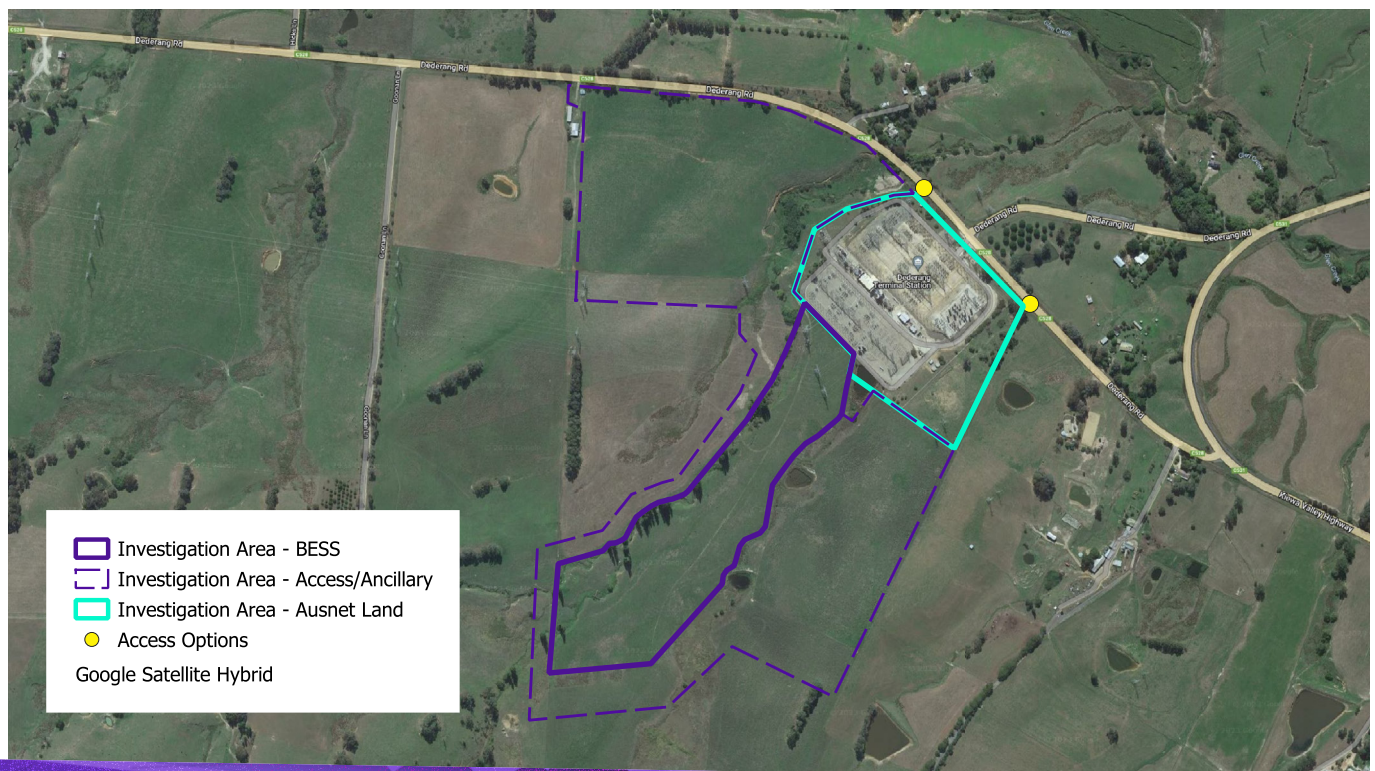
Additionally, it is anticipated that a planning permit application process (from the state Minister for Planning) will have a formal public submission period where interested parties will also be able to provide their feedback on the final proposal.

In the meantime, if you have any questions, concerns or feedback please reach out to us, at our contact details below.

### Feedback and questions are always welcome!

As the project progresses, we will communicate key project updates here and via newsletters. To subscribe to our newsletter distribution list, please visit the project website.

Figure 1 - Dederang BESS investigation area



## Contact us

**1800 HI MINT (446 468)**

**dederangbattery@mintrenewables.com**

**complaints@mintrenewables.com**

**www.dederangbess.com.au**

**www.mintrenewables.com**